

BETA

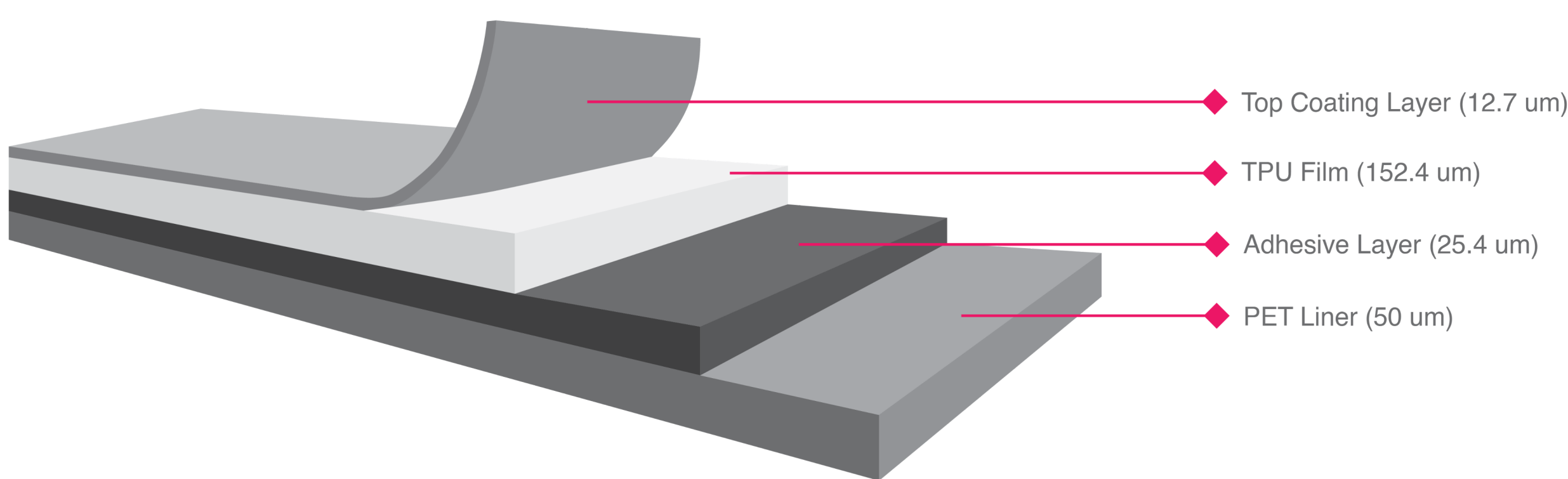
SIGMA

ALPHA

MATTE

## The Project 3 MATTE

MATTE combines protection and style. Protect the paint from harsh condition, while the film give you the ability to transform your existing car paint's to a special matte finishing. The MATTE film can be applied on matte or glossy paint.



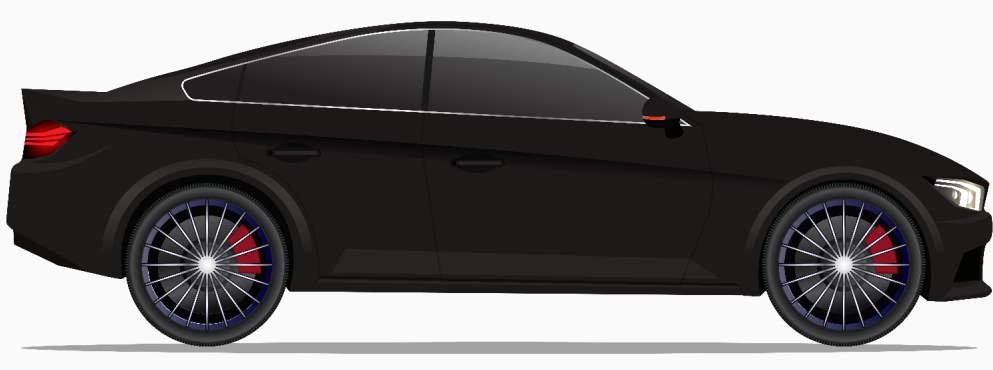
Technical Data Sheet

Click to view TDS of MATTE

## Key Features

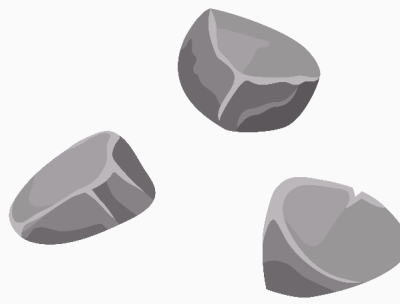
### Sleek Matte Finish

Designed to provide a high-end, satin-like finish that enhances the visual appeal of your vehicle. This film is ideal for preserving the aesthetic of factory matte, magno, frozen, or frosted finishes, and it can transform glossy paint into a sleek matte surface for a distinguished and elegant look.



### Superior Impact Protection

Shields against stone chips, abrasions, and environmental damage, preserving the original paint with durable polyurethane film.



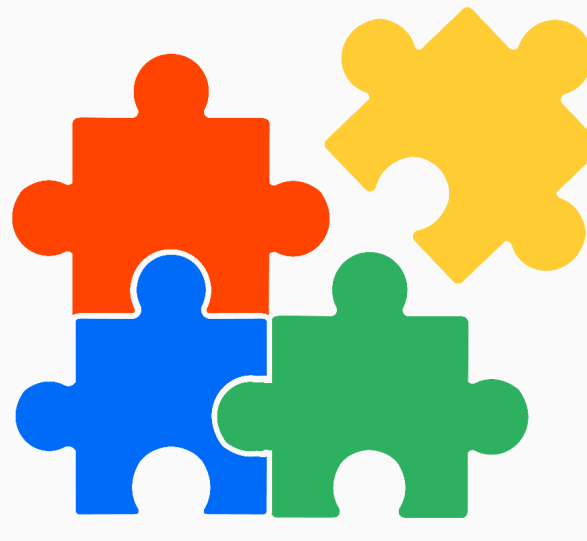
### Easy Maintenance

The Project 3 Matte allows effortless washing and drying while preserving its matte sheen, keeping your vehicle clean and stylish.



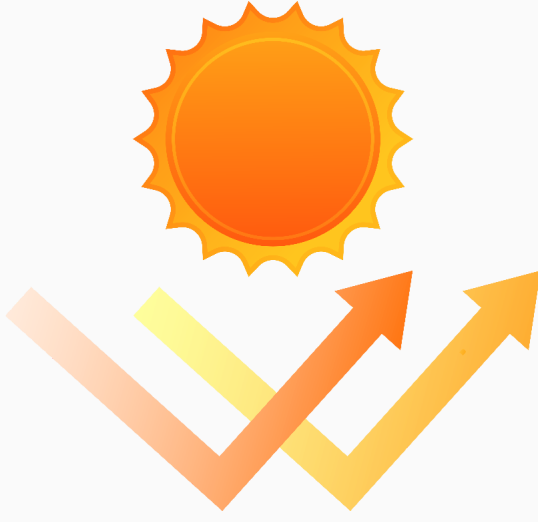
### Custom Applications

Perfect for accentuating gloss aero parts, carbon fiber elements, and factory flares, splitters, and trim pieces. The film seamlessly integrates with these components, enhancing their appearance and providing consistent protection across the vehicle.



### Non-Yellowing and Stain Resistance

The film is engineered to resist yellowing from UV exposure and staining from contaminants like bird droppings and road grime. This ensures that the matte finish remains clear and visually appealing over time.



### Aesthetic Boost

Enhances protection while giving your vehicle a standout satin look—perfect for making a bold statement.



### Feature



### MATTE

### Thickness

6.5 mil

7.5 mil

7.5 mil

8 mil

### Finishing

Virtually undetectable with a high-gloss appearance

Stylish matte finish that can transform glossy paint to a matte

High-gloss finish that enhances the underlying paint's luster

Stylish matte finish that can transform glossy paint to a matte

### Visibility

Designed to be virtually undetectable once installed

Provides a distinctive matte appearance, altering the original look of the vehicle

High clarity, making it suitable for intricate designs and curved surfaces

Provides a distinctive matte appearance, altering the original look of the vehicle

### Durability

Engineered for extended durability with anti-yellowing properties; includes a hydrophobic top

Provides extended durability and anti-yellowing features; includes a hydrophobic top coat

Offers rock chip protection with exceptional tensile strength; includes a hydrophobic top

Provides extended durability and anti-yellowing features; includes a hydrophobic top coat

### Warranty

7 Years

5 Years

10 Years

7 Years

## Contact Us

Please feel free to drop us a message using the contact form on the left or via quick chat using Whatsapp / Facebook messenger buttons in on the bottom right corner.

First name	Last name
<input type="text"/>	<input type="text"/>
Contact number	Email
<input type="text"/>	<input type="text"/>
Inquiry type	
<input type="text"/>	
Message	
<input type="text"/>	

Send message

### Social Media



Facebook



Instagram



Rednotes



### Need Quick Support?

Get in touch with our dedicated support team via WhatsApp message. Our commitment is to deliver swift and hassle-free support, prioritising the prompt and effective resolution of your concerns.



WhatsApp



Messenger

### Malaysia Sole Distibutor

Address :  
2, Jalan Sungai Tiram 7,  
11900 Bayan Lepas,  
Pulau Pinang,  
Malaysia

+6011-1544 5789  
info@project3.my

### Paint Protection Films

BETA

SIGMA

ALPHA

MATTE

### Window Films

SHADE PLUS

SHADE PRO

